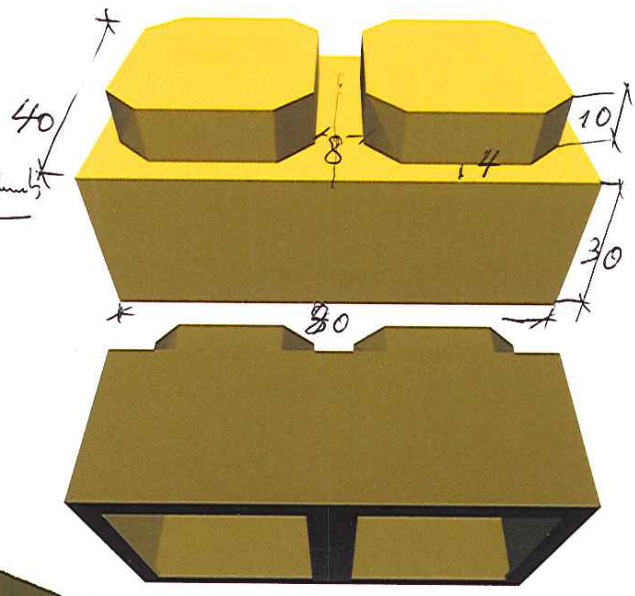
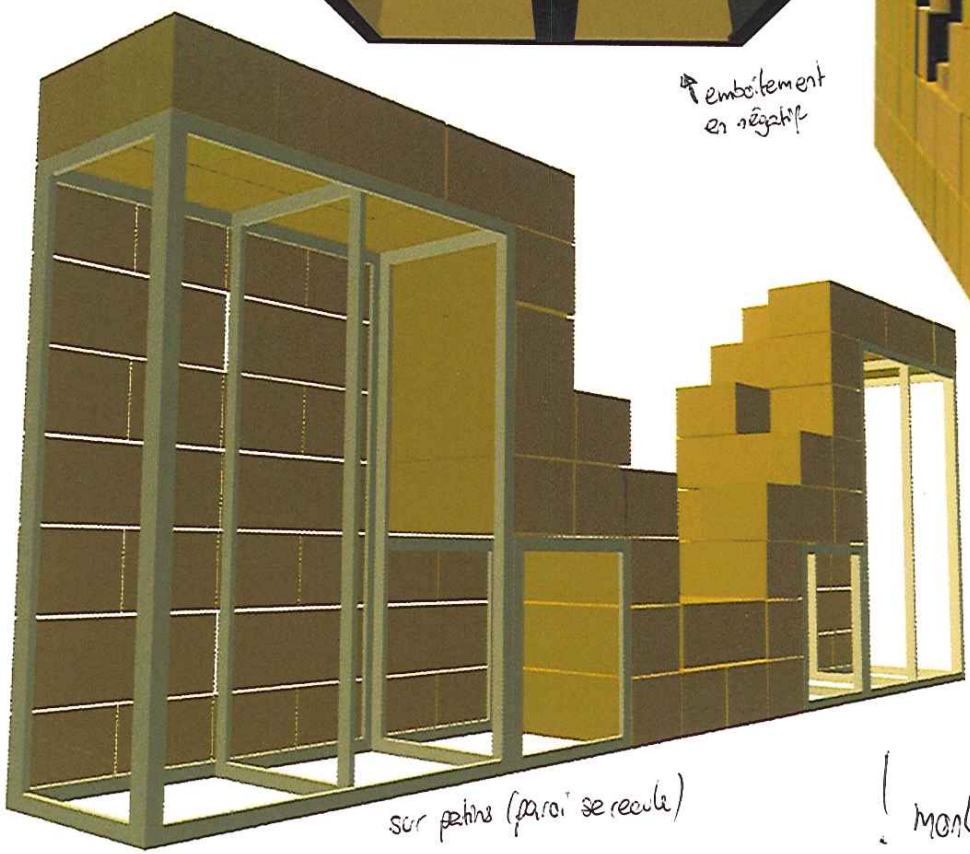


(13)? 27 pièces

H (Ade)? pièces sans emboîtement



emboîtement en négatif

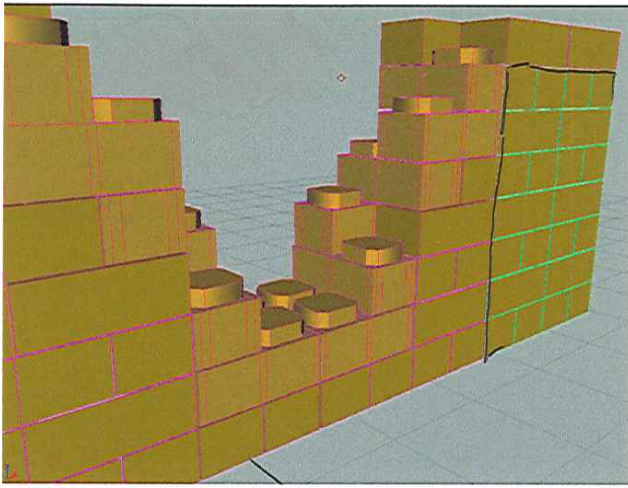


sur petits (paroi se recule)

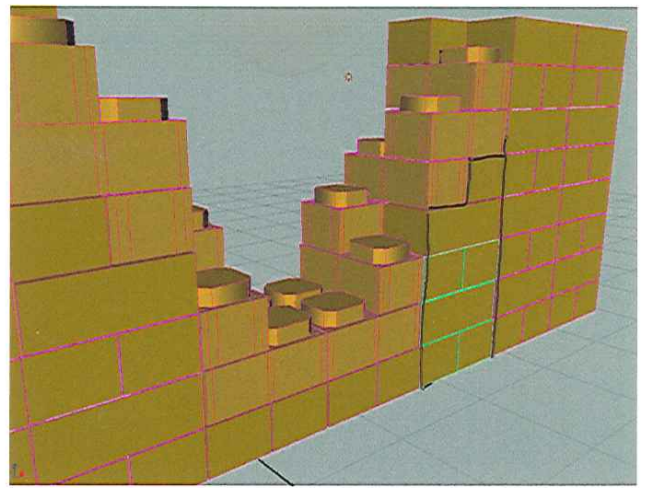
3 blocs pour le 22.12.03

! monte dessus le mur!

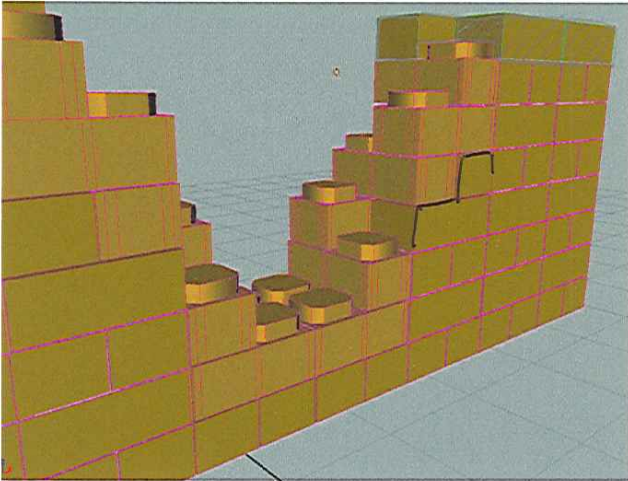




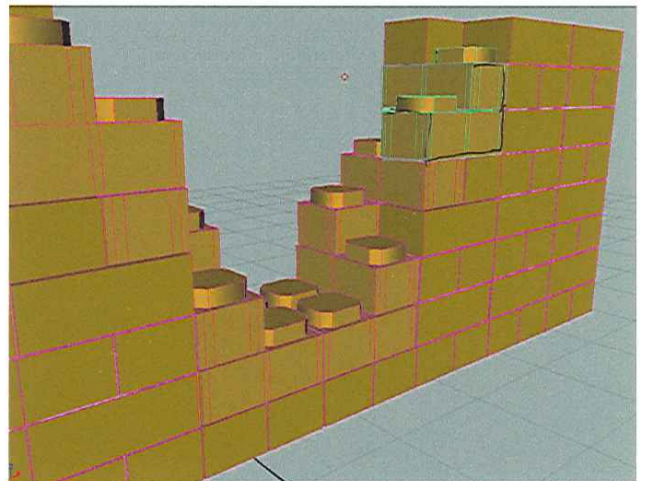
panneau cour 1



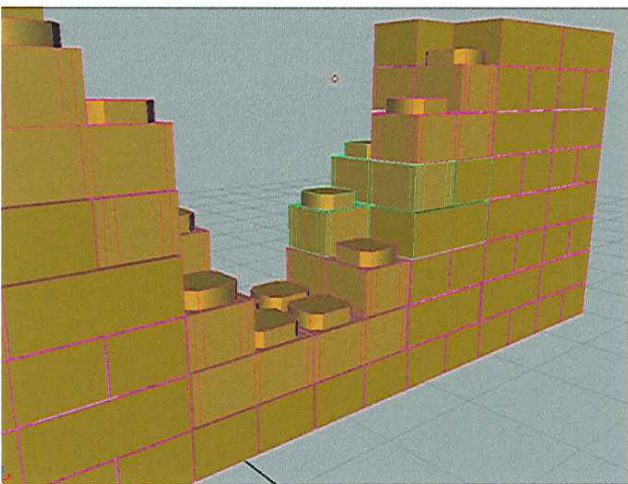
panneau cour 2



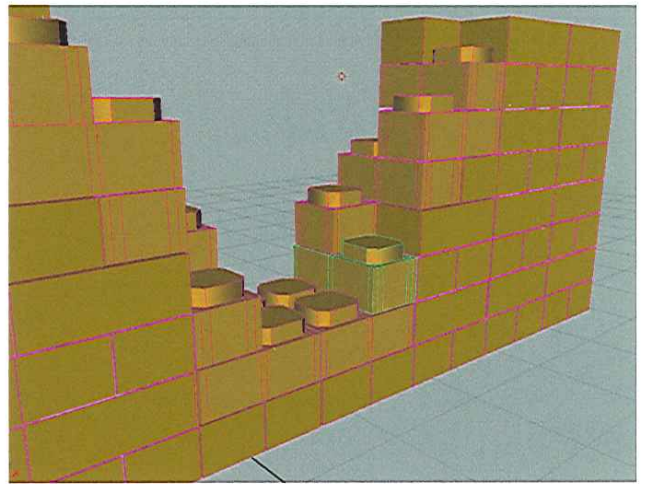
ensemble blocs cour 1



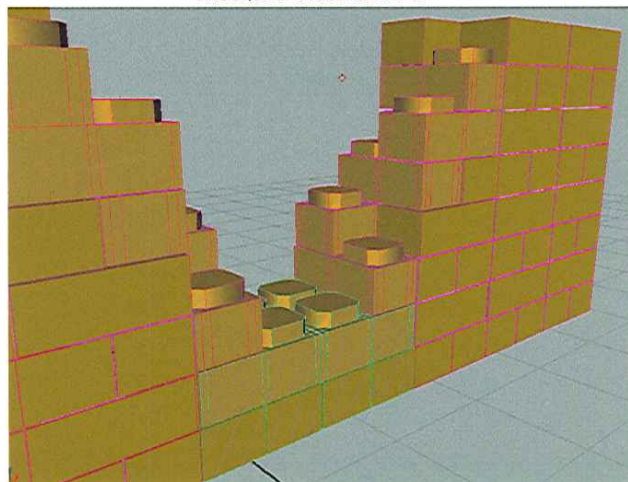
ensemble blocs cour 2



ensemble blocs cour 3



ensemble blocs cour 4

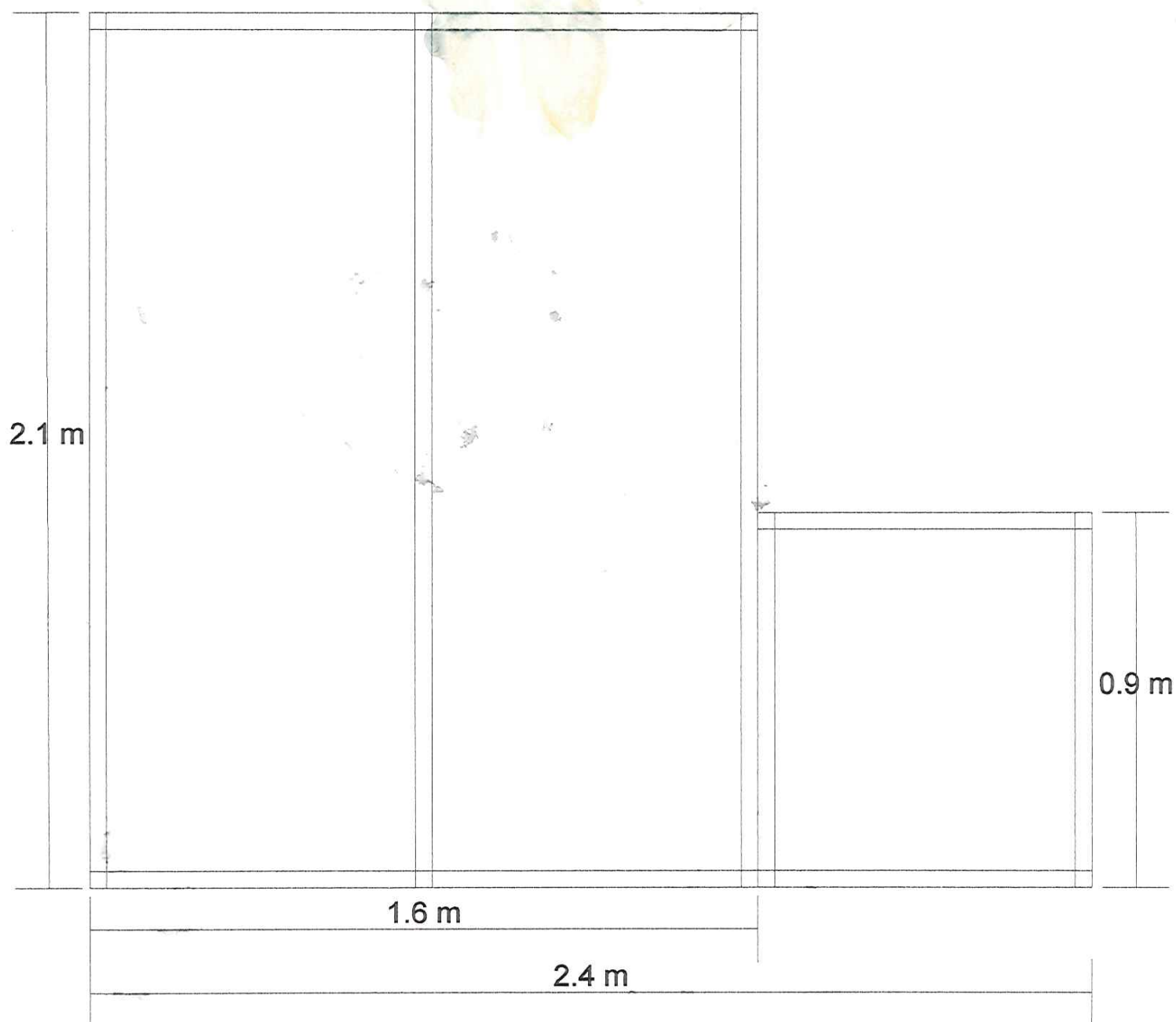


ensemble blocs central

THEATRE DES OSSES  
Mondiocompatible

Scénographie de J-C De Besmel

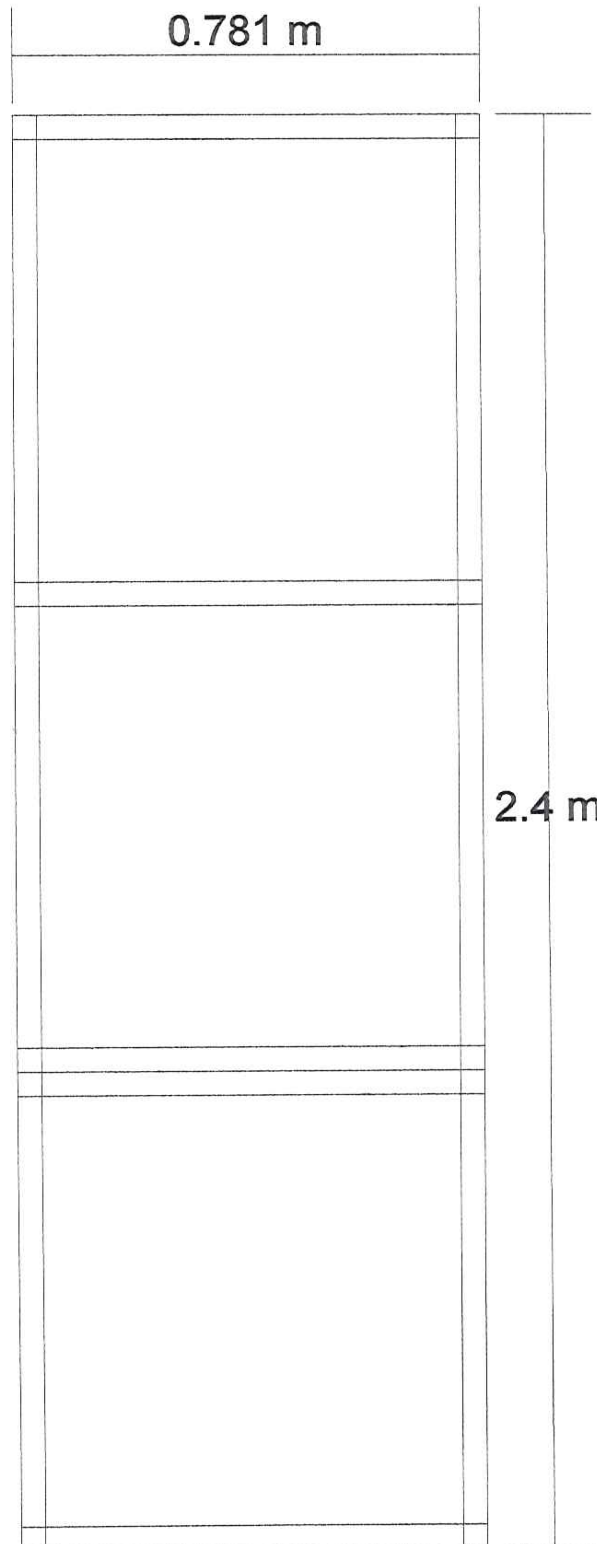
chassis, face  
mesures en cm. et extérieures



THEATRE DES OSSES  
Mondiocompatible

Scénographie de J-C De Besmel

chassis, haut et bas  
mesures en cm. et extérieures



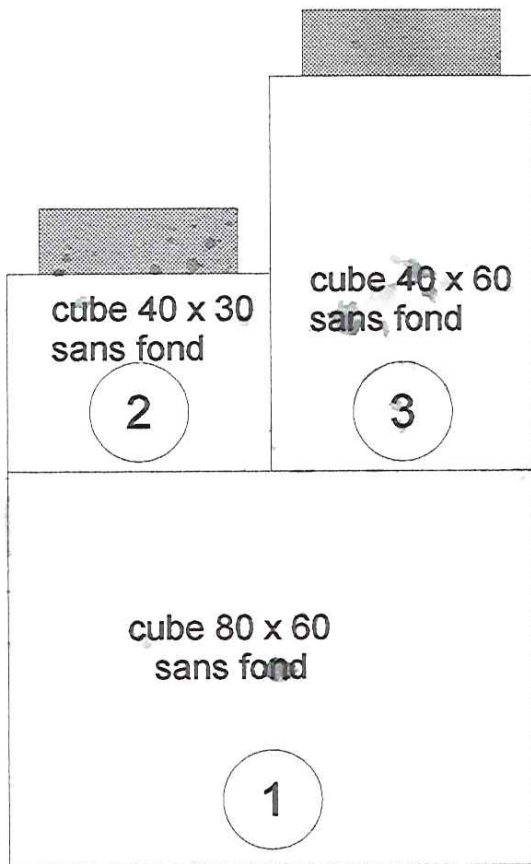


THEATRE DES OSSES  
Mondicompatible

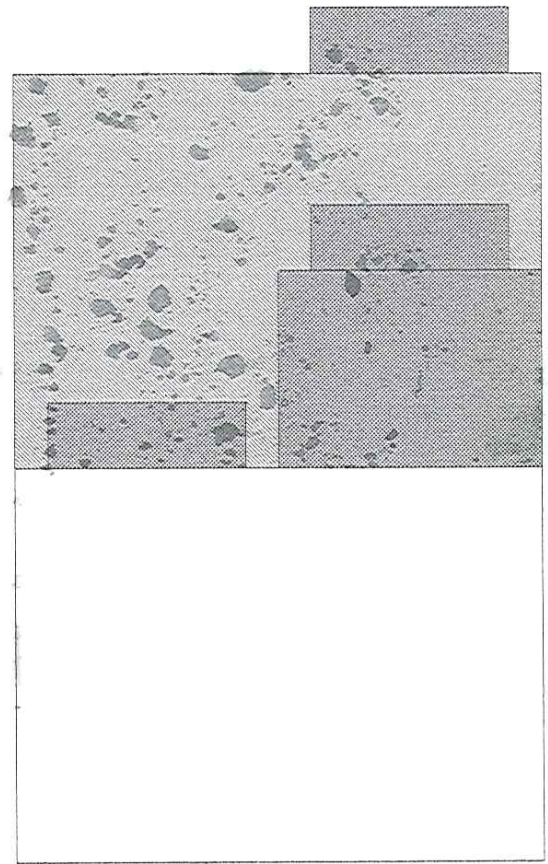
Scénographie de J-C De Besmel

cube côté

de face



de côté



ar. vide  
face 2 x 80 x 58,1  
côtés 4 x 78,1 x 58,1  
dessus 2 x 80 x 80

2

dessus 2 x 40 x 40 <sup>40 x 39?</sup>  
côtés 4 x 40 x 28,1 <sup>2 x 38? - 28?</sup>  
côtés 4 x 36,2 x 28,1

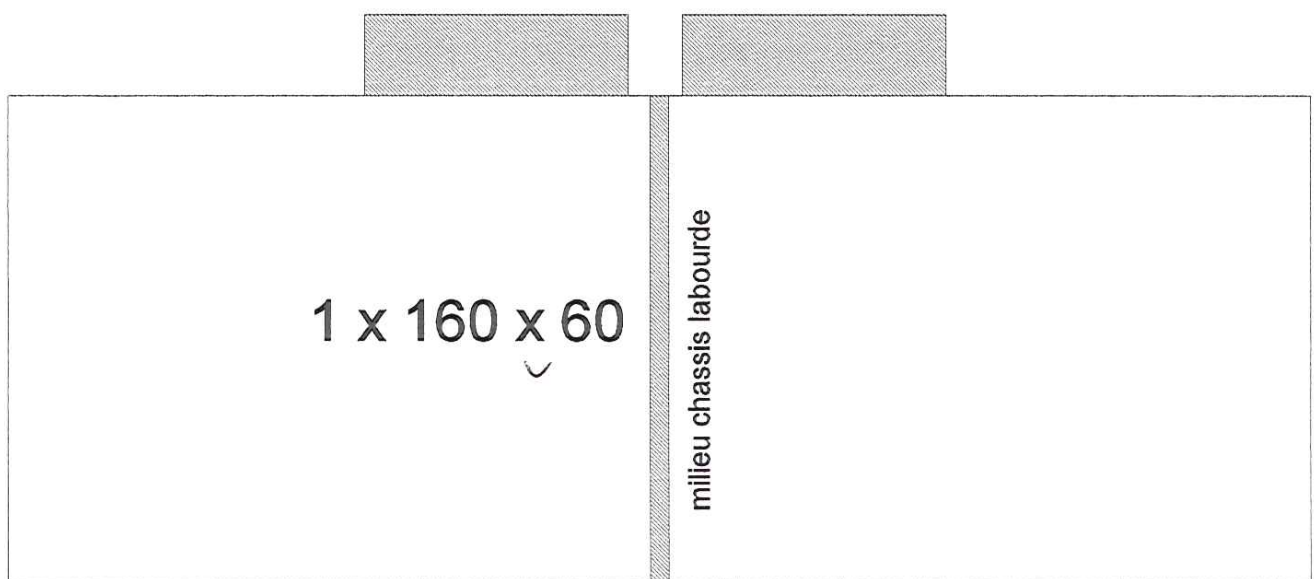
3

ar. vide  
face 2 x 40 x 58,1  
côtés 4 x 78,1 x 58,1 ✓  
dessus 2 x 80 x 40 ✓

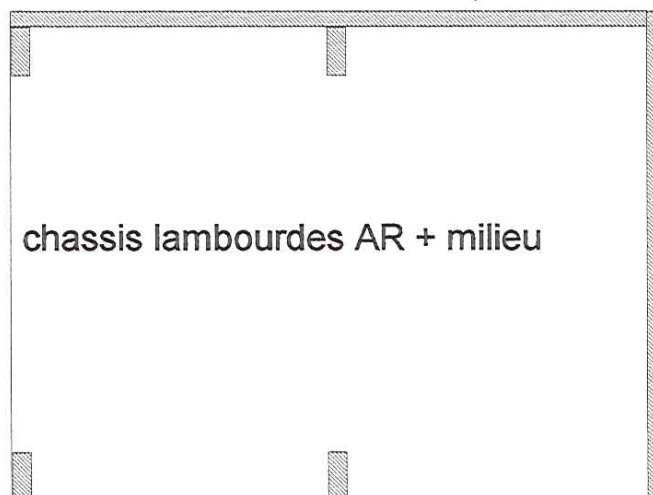
THEATRE DES OSSES  
Mondiocompatible

Scénographie de J-C De Besmel

cube bas 1



1 x 160 x 78,1 ✓

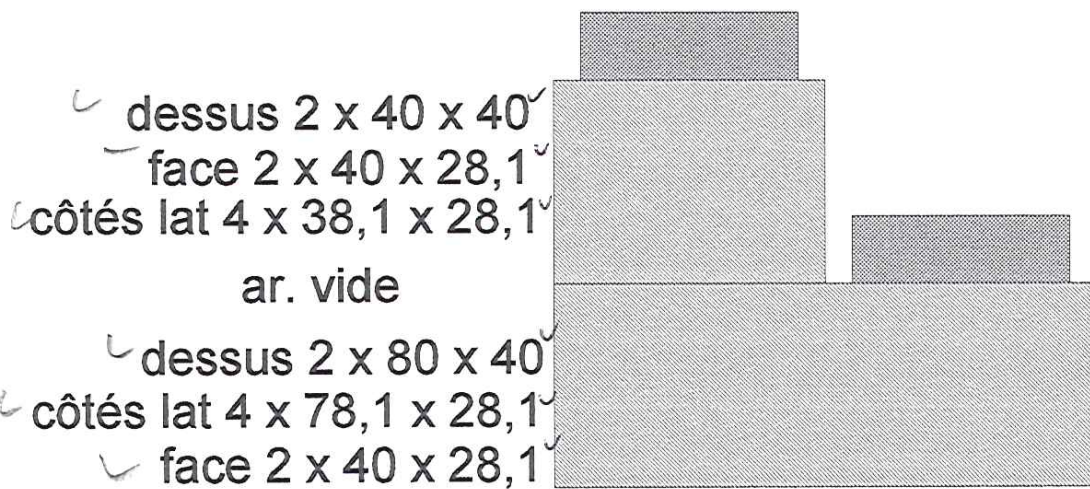
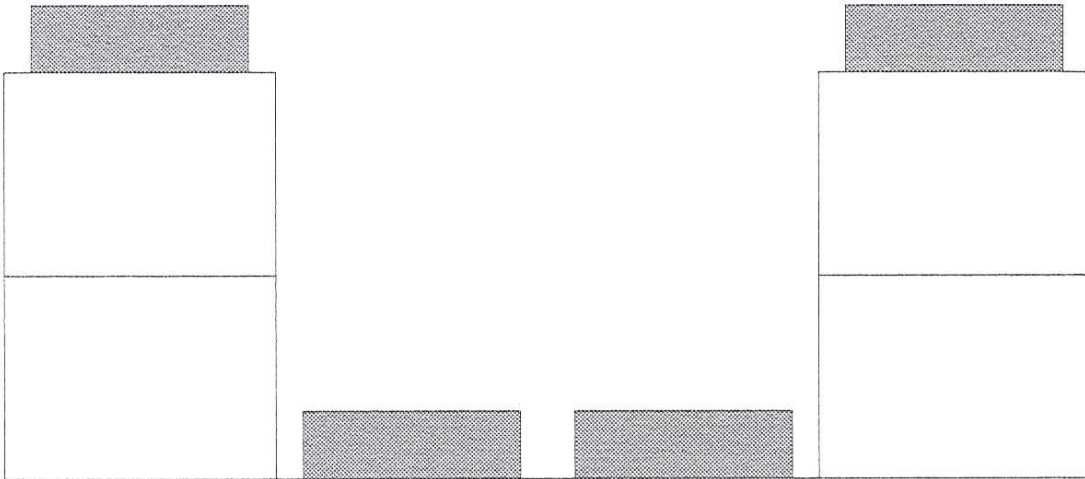


THEATRE DES OSSES  
Mondiocompatible

Scénographie de J-C De Besmel

cube bas 2

↓ paroi 210 x 160 2 pces  
+ " 80 x 90 2 pces



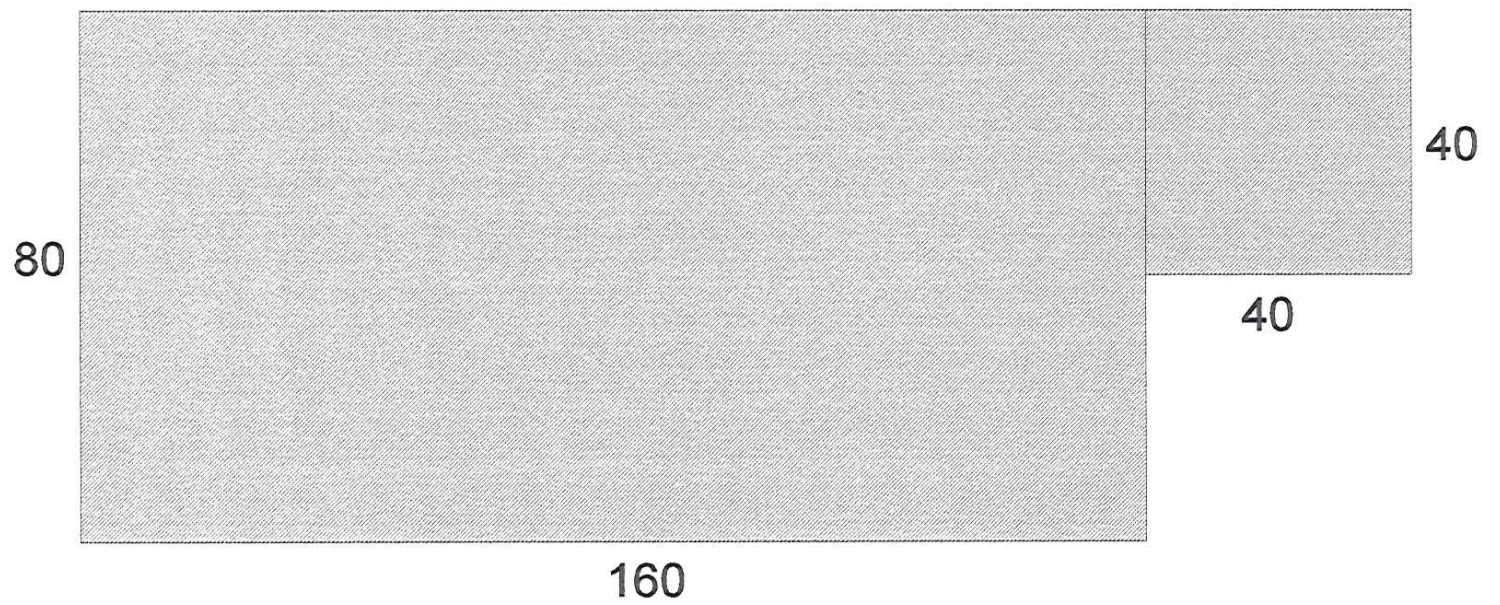
Jardin + Cour



THEATRE DES OSSES  
Mondiocompatible

Scénographie de J-C De Besmel

cube haut Jardin

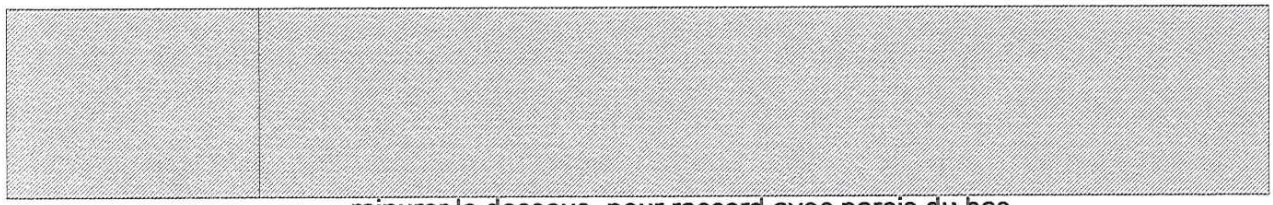
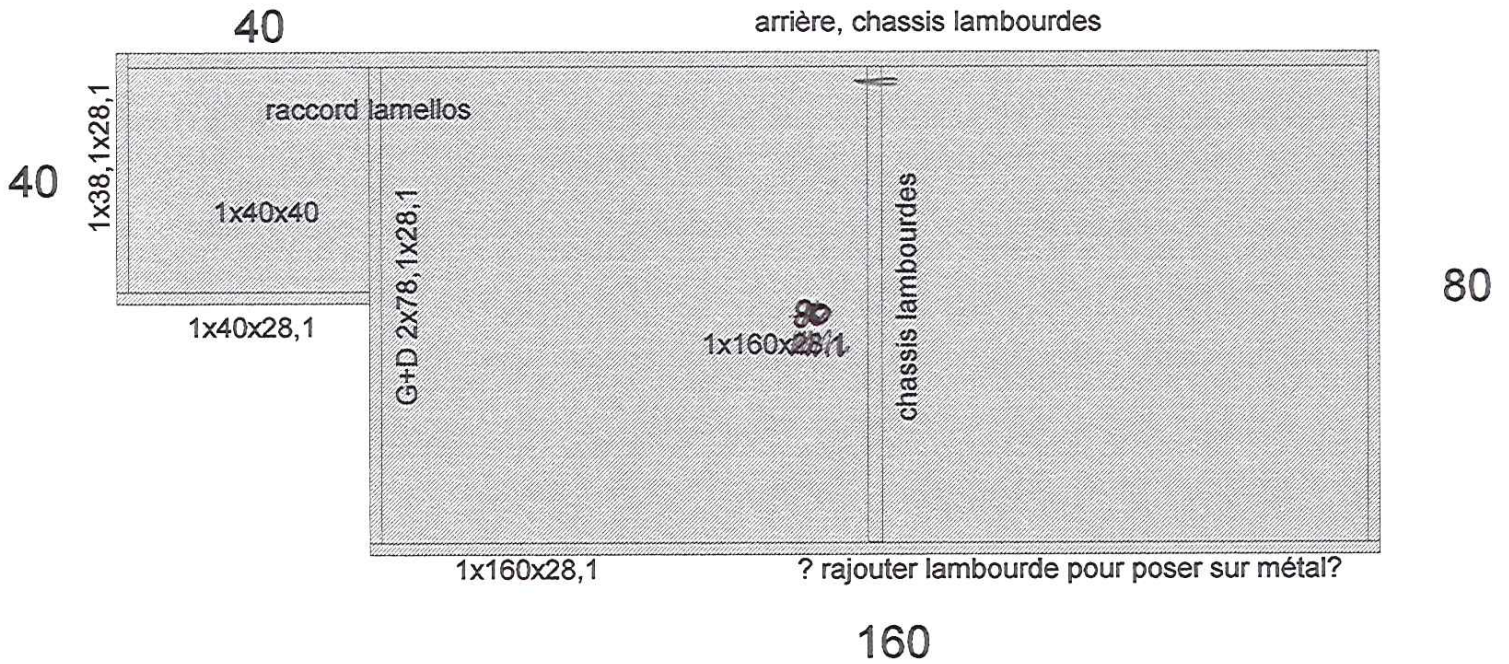




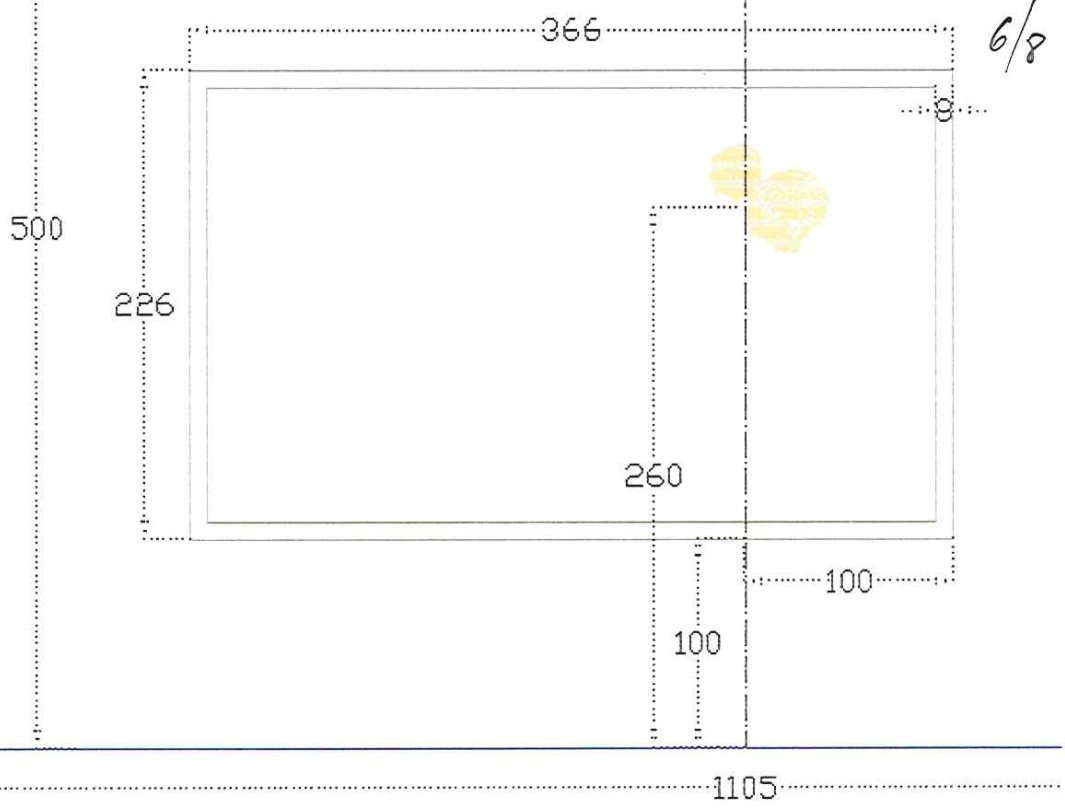
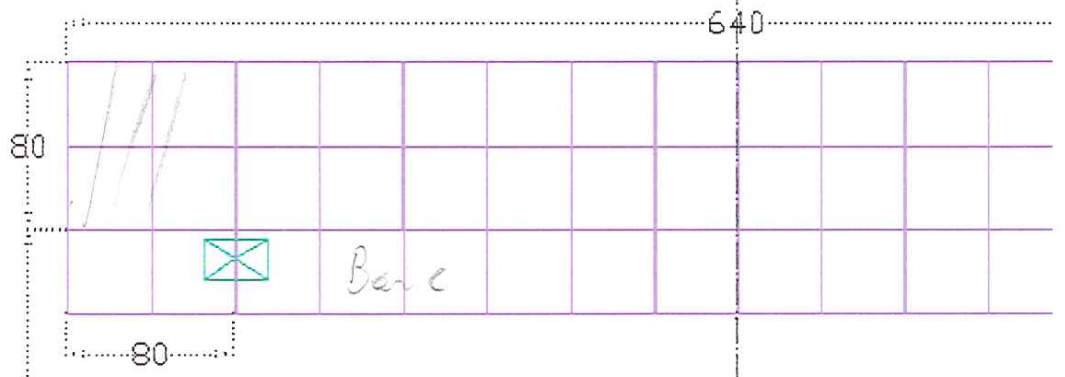
4x 166<sup>2</sup>  
 18x 24<sup>3</sup>  
 4x 72<sup>2</sup>

THEATRE DES OSSES Mondiocompatible
Scénographie de J-C De Besmel
cube haut Cour

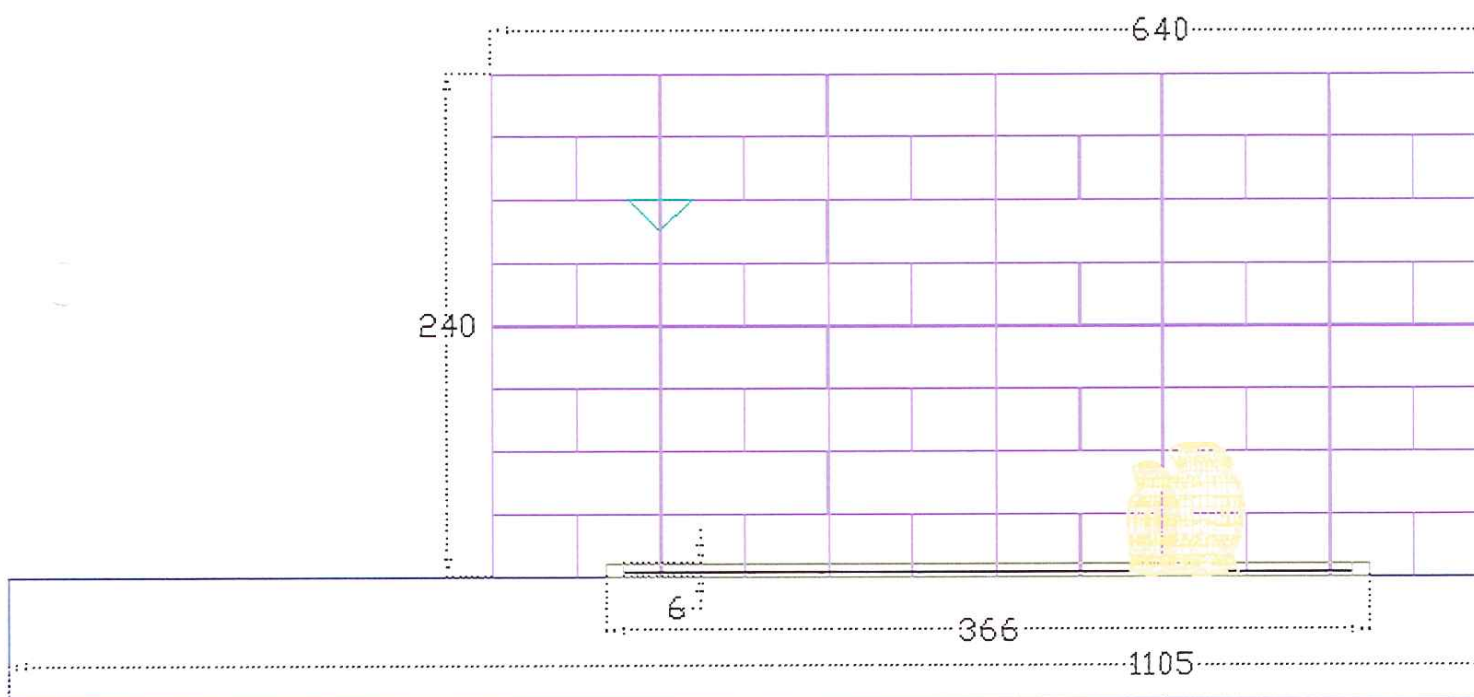
lambourdes  
 28<sup>1</sup>  
 16<sup>2</sup>  
 76<sup>8</sup>  
 pieds  
 4x  
 28<sup>1</sup>  
 16<sup>2</sup>  
 76<sup>8</sup>  
 28<sup>1</sup>  
 74



2x 196<sup>2</sup>









II

valeurs:

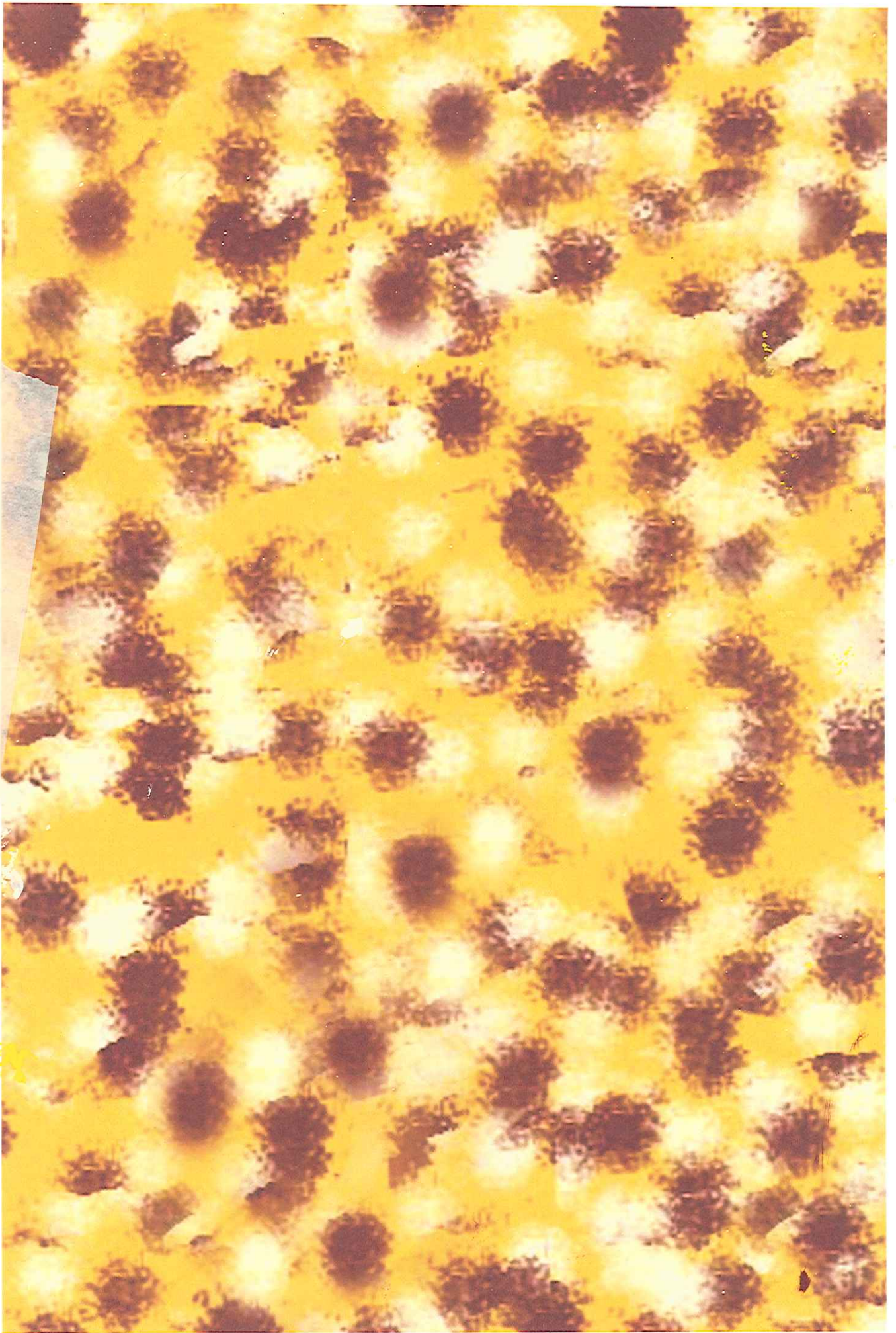
R:255 PhotoShop: Jaune orangen

v:200

b: 0



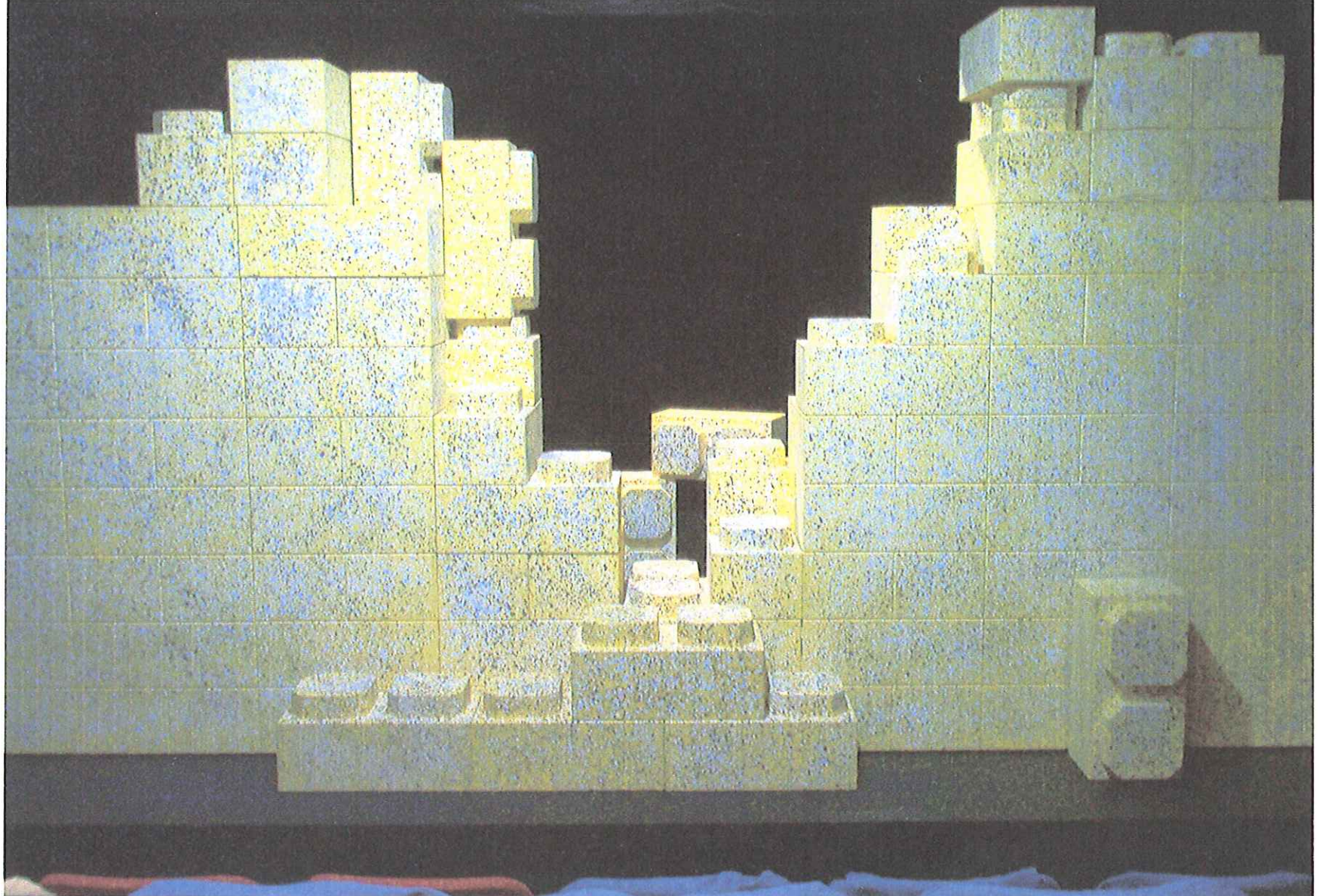




A l'échelle 1:1. Points peuvent être un peu moins gros.

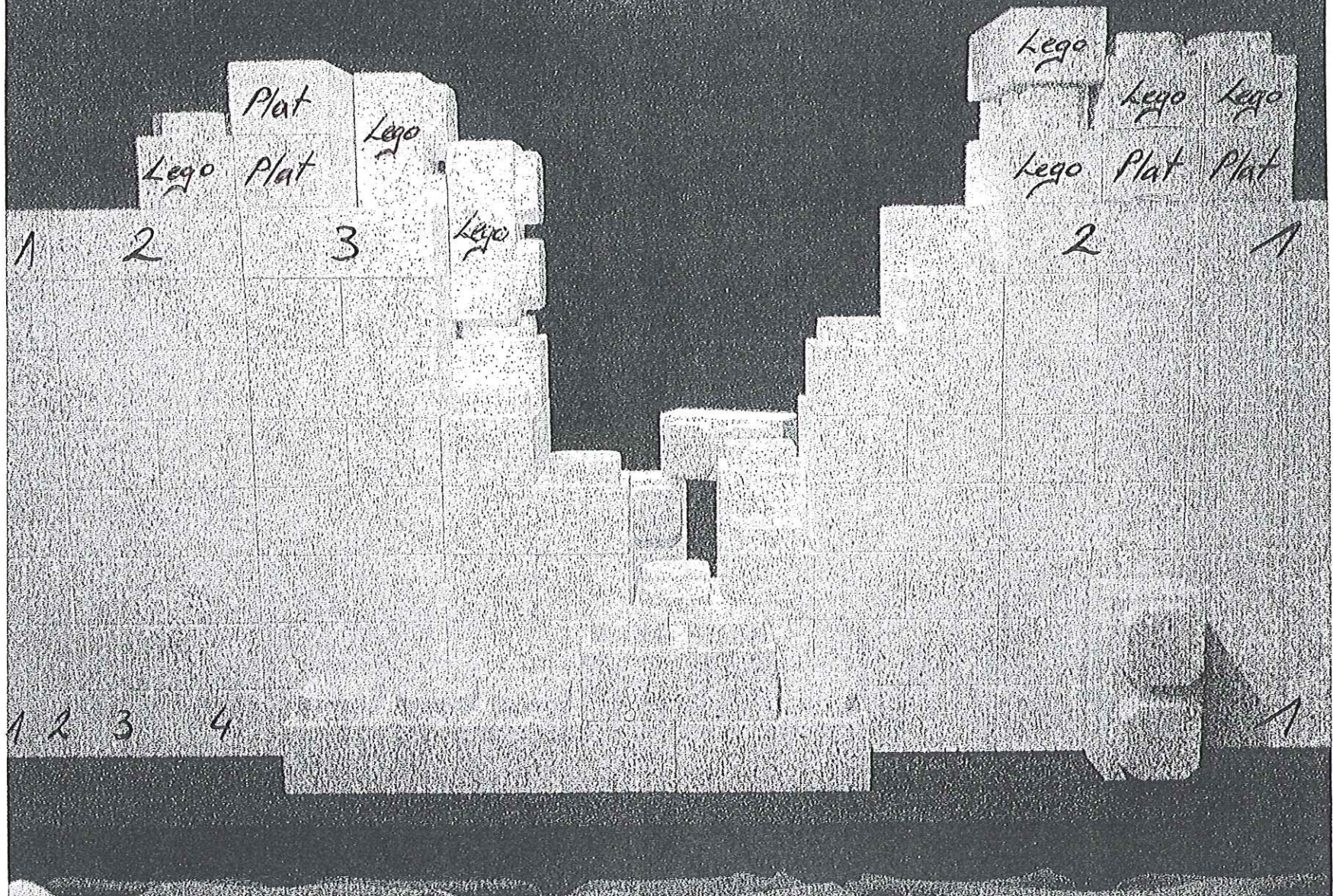


# ACTE I



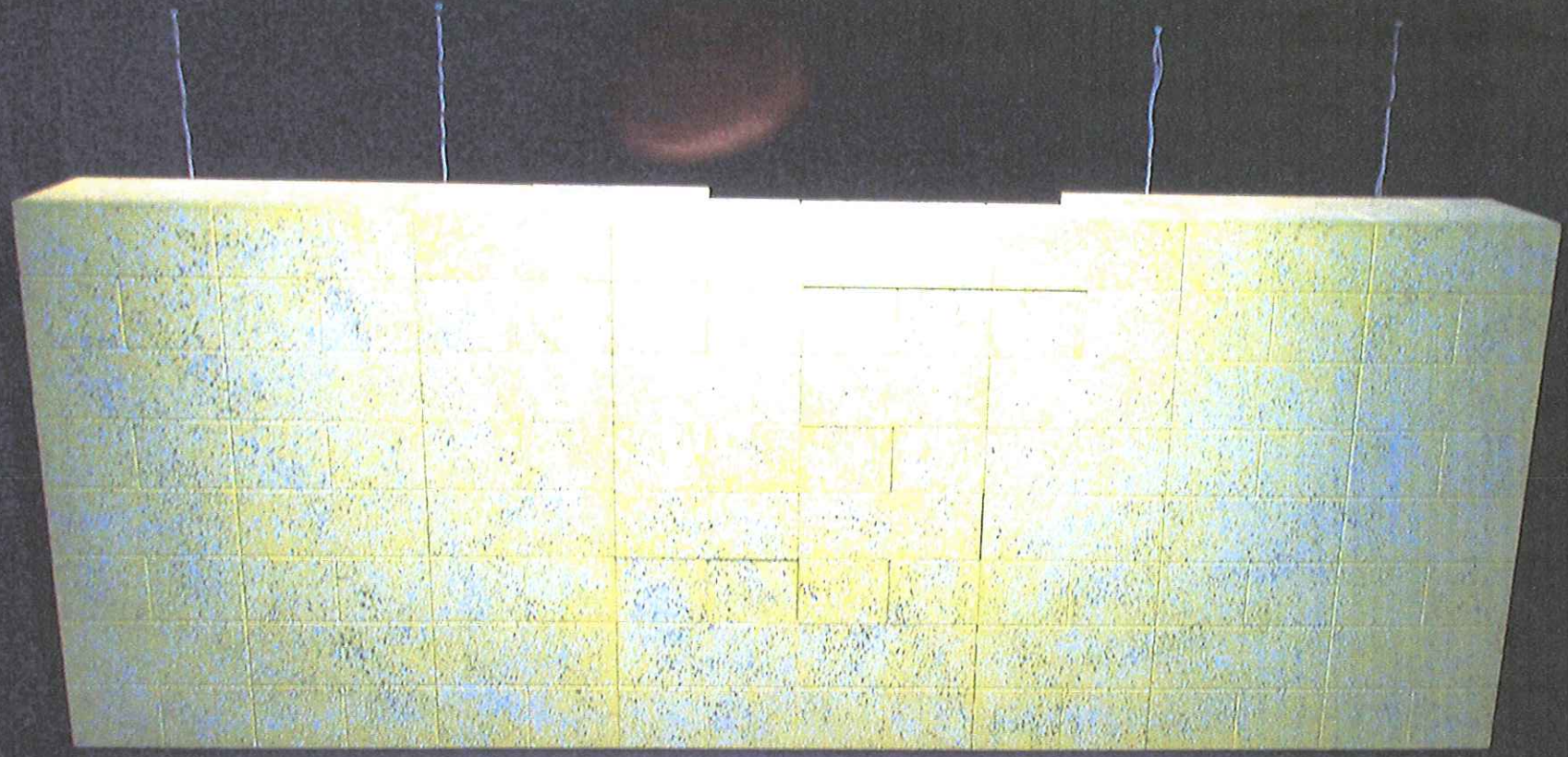


# ACTE I





ACTE I FIN



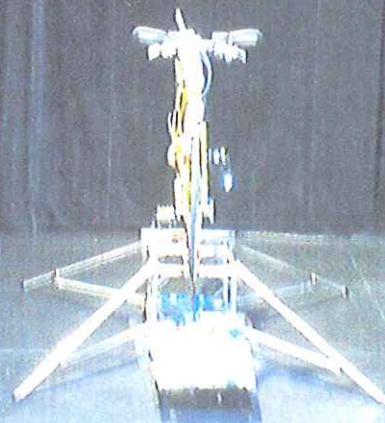


ACTE II





ACTE II FIN





# ACTE III

